



# KNIFE-GATE VALVES

# L SERIES

## DOUBLE-ACTING PNEUMATIC CYLINDER

- The air supply pressure to the pneumatic cylinder is a minimum of 6 Kg/cm<sup>2</sup> and a maximum of 10 Kg/cm<sup>2</sup>, the air must be dry and lubricated.
- For ND50 to ND200 valves, the cylinder's jacket and covers are made of aluminium, the rod of AISI304, the piston of rubber-coated steel and the O-ring seals are made of nitrile.
- For valves larger than ND200 the covers are made of nodular cast iron or carbon steel.
- On request, we can also supply the actuator made entirely of stainless steel, especially for installation in corrosive atmospheres.
- **A = Max. width** of the valve (without actuator).  
**B = Max. height** of the valve (without actuator).  
**C = maximum length** when the gate is centred.
- Available: ND50 to ND1200, other ND on request.
- The weights are approximate and vary according to the material and the valve's accessories.

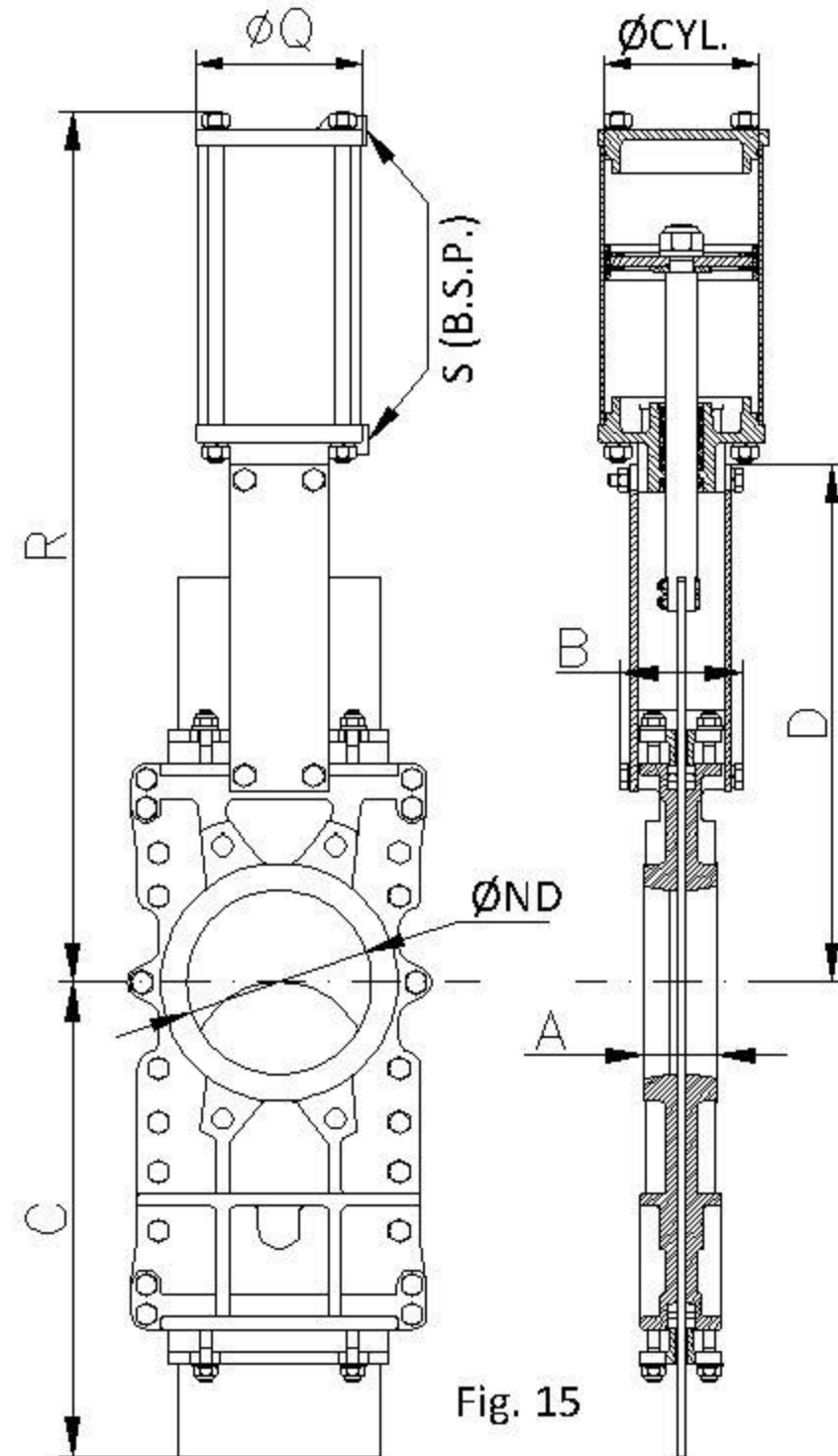


Fig. 15

ND	ΔP (Kg/cm <sup>2</sup> )	DRAW (Nw)	A	B	C	D	R	Ø CYL.	Ø ROD	ØQ	S (B.S.P.)	Weight (kg.)
50	10	894	40	91	225	243	416	80	20	90	1/4"	12
65	10	1508	40	91	265	269	456	80	20	90	1/4"	13
80	10	2281	50	91	310	293	497	80	20	90	1/4"	19
100	10	3561	50	91	370	334	561	100	20	110	1/4"	19
125	10	5565	50	101	430	367	636	125	25	135	1/4"	33
150	10	6419	60	101	495	419	717	160	30	170	1/4"	43
200	8	10020	60	118	630	525	874	200	30	215	1/4"	65
250	6	11230	70	118	770	620	1030	200	30	215	3/8"	104
300	6	16210	70	118	895	704	1160	250	40	270	3/8"	126
350	5	17740	96	290	1050	780	1364	250	40	270	3/8"	200
400	5	23260	100	290	1185	855	1482	250	40	270	3/8"	281
450	3	22260	106	290	1320	975	1662	250	40	270	1/2"	427
500	3	27470	110	290	1455	1064	1802	300	45	382	1/2"	540
600	3	39850	110	290	1720	1244	2081	350	45	444	1/2"	609
700	2	36880	110	320	1995	1425	2400	350	45	444	1/2"	1054
800	2	48980	110	320	2230	1615	2693	350	45	444	1/2"	N.G.
900	2	61230	110	320	2465	1823	3037	400	50	508	1/2"	N.G.
1000	*	*	110	320	2620	1992	3306	400	50	508	1/2"	N.G.
1100	*	*	150	340	3030	2217	3587	400	50	508	1/2"	N.G.
1200	*	*	150	340	3250	2351	3868	400	50	508	1/2"	N.G.

\* → Consult

table 8

N.G.: Weight not given